



INSTALLATION INSTRUCTIONS

FFA 1.10111.x

Subaru WRX / STI 2011-2014 Sedan Axle Back



BILL OF MATERIALS

Item #	Description	QTY
1	EXHAUST PIPE L/R	2
2	EXHAUST TIPS	2
3	CLAMPS	2
4	ANTI-SEIZE THREAD PASTE	1
5	BOLTS AND NUTS	4
6	GASKETS	2

TOOL LIST

RATCHET
13mm, 14mm, 15mm SOCKET / OPEN END WRENCH
EXHAUST HANGER REMOVAL TOOL (OPTIONAL)
TORQUE WRENCH
WIRE BRUSH
RUBBER MALLET

MODELS

2011-2014 WRX SEDAN
2011-2014 STI SEDAN

DISCLAIMER: PLEASE READ AND MAKE SURE YOU FULLY UNDERSTAND THE INSTALLATION INSTRUCTIONS PRIOR TO INSTALLING FACTION FAB PRODUCTS AND ACCESSORIES. FAILURE TO INSTALL THE PRODUCT CORRECTLY CAN AND WILL RESULT IN IRREVERSIBLE VEHICLE DAMAGE AND OR PERSONAL HARM. IF YOU DO NOT FEEL COMFORTABLE WITH ANY OF THE REQUIRED STEPS, WE HIGHLY SUGGEST TAKING THE VEHICLE TO A QUALIFIED AND EXPERIENCED TECHNICIAN. FAILURE TO UNDERSTAND THE INSTRUCTIONS WHICH RESULTS IN DAMAGE AND OR INJURY IS THE SOLE RESPONSIBILITY OF THE INSTALLER AND ALL FAULT LIES WITH THAT PARTY AND OR INDIVIDUAL AND IS NOT IN ANY WAY, SHAPE OR FORM THE RESPONSIBILITY OF FACTION FAB.

FACTION FAB PRODUCTS ARE SOLD FOR "OFF-ROAD" USE ONLY AND MAY NOT MEET LEGAL REQUIREMENTS FOR OPERATIONS ON PUBLIC ROADS AND HIGHWAYS. WE PUT THE RESPONSIBILITY SOLELY ON THE END CONSUMER/CUSTOMER TO VERIFY THAT THE PRODUCTS DO NOT AFFECT THE VEHICLES ELIGIBILITY TO BE DRIVEN ON PUBLIC ROADS AND HIGHWAYS. INSTALLATION OF FACTION FAB PRODUCTS MAY VOID FACTORY OR AFTERMARKET WARRANTIES.

USE OF PRODUCT IN A NON-CONFIRMED APPLICATION, DISASSEMBLY OF THE PRODUCT, MODIFICATION OF THE PRODUCT, EXPOSING PRODUCT TO CORROSIVE OR PETROLIUM BASED CHEMICANS WILL VOID ANY AND ALL WARRANTY.

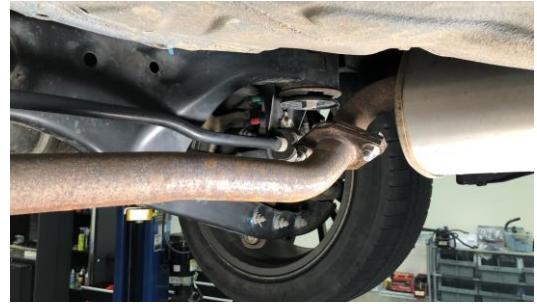
1

RAISE THE REAR END OF THE VEHICLE. ALWAYS ENSURE PROPER SAFETY PROCEDURE IS FOLLOWED WHEN WORKING UNDERNEATH YOUR CAR, INCLUDING THE USE OF JACK STANDS OR OTHER EQUIPMENT



2

USING A 14mm, LOOSEN THE BOLTS CONNECTING THE MID-PIPE TO THE MUFFLER. LEAVE THE BOLTS IN THE HOLES UNTIL YOU'RE READY TO REMOVE THE MUFFLER



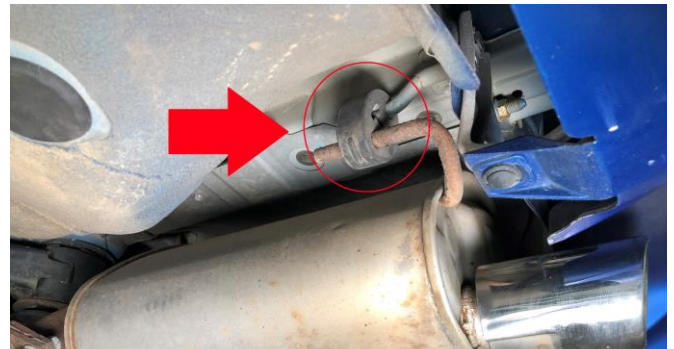
3

REMOVE MUFFLER BRACKET FROM OUTSIDE HANGER



4

REMOVE MUFFLER BRACKET FROM INSIDE HANGER. BE PREPARED FOR THE EXHAUST TO FALL. REMOVE BOLTS AND MUFFLER



5

REMOVE BOLTS FROM THE FLANGE AND REMOVE MUFFLER



6

REPEAT 1-5 ON THE OTHER SIDE OF THE VEHICLE



7

CLEAN THE MID-PIPE FLANGES WITH A WIRE BRUSH TO REMOVE OLD GASKET MATERIAL. THIS ENSURES A PROPER SEAL WITH THE NEW GASKET



8

INSTALL THE FACTION FAB EXHAUST PIPE ON THE HANGERS



9

PUT A BEAD OF ANTI-SEIZE ON THE BOLTS AND WORK IT INTO THE THREADS



10

INSTALL GASKET, BOLTS, AND NUTS IN THE FLANGE, BUT DO NOT TIGHTEN ALL THE WAY (THIS WILL BE DONE IN THE LAST STEP)



11

SLIDE THE CLAMP ONTO THE EXHAUST PIPE, FOLLOWED BY THE EXHAUST TIP



12

FIT THE TIPS TO DESIRED DEPTH AND ORIENTATION, WHILE ENSURING THAT THERE IS NO CONTACT WITH THE BUMPER



13

DUE TO MANUFACTURING AND SHIPPING, THE TIP MAY BE A TIGHT FIT ON THE EXHAUST PIPE, AND USE OF LIGHT FORCE MAY BE NECESSARY TO GET THE THEM IN THE PROPER POSITION. IF NEEDED, WE HIGHLY RECOMMEND A CLEAN RUBBER Mallet AND PADDING (SUCH AS A MICROFIBER TOWEL) TO **LIGHTLY** TAP THE TIP ONTO THE PIPE. THE TIPS ARE DESIGNED TO HAVE ~3/4" ADJUSTABLE VARIANCE IN THE DEPTH AND CAN BE SET TO YOUR TASTE

14

ORIENT THE CLAMP FOR EASY ACCESS WHILE ALSO GIVING CLEARANCE. TIGHTEN THE CLAMP WITH A 13mm TO **20 ft•lbs** WHILE MAKING SURE TO NOT MOVE THE TIP



15

COMPARE VERTICAL DISTANCE BETWEEN THE LEFT AND RIGHT TIPS AND THE BUMPER



16

ADJUST THE VERTICAL DISTANCE OF THE TIPS IF NECESSARY OR HAVE A FRIEND HOLD IT IN THE DESIRED FINAL FITMENT LOCATION. TIGHTEN THE FLANGE BOLTS WITH A 15mm TO **30 ft•lbs**.



+

16

DROP THE VEHICLE BACK TO THE GROUND, DRIVE VEHICLE AND CHECK TO MAKE SURE THAT THERE IS STILL NOT CONTACT WITH BUMPER WHILE SETTling

