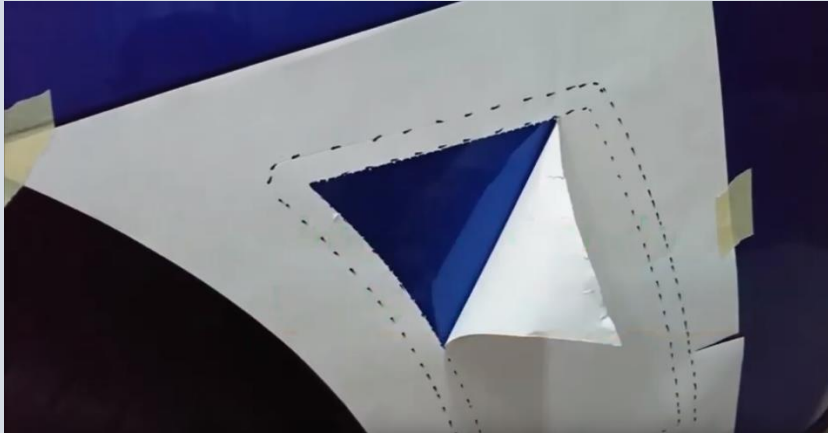


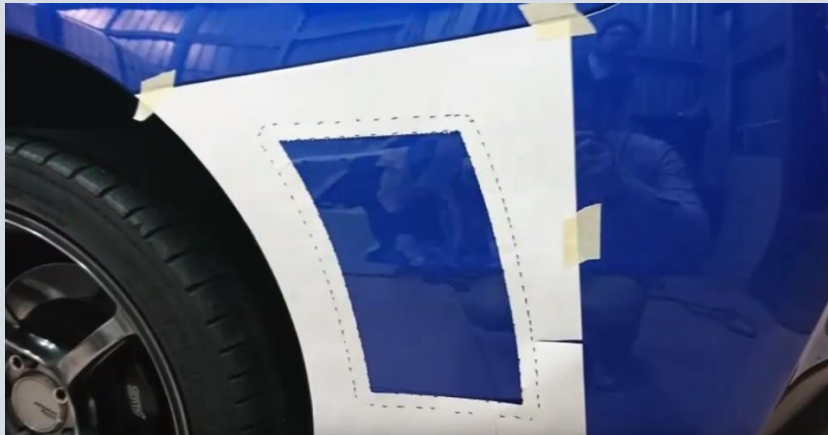


OLM S207 STYLE REAR BUMPER VENT INSERTS 2015+ WRX / STI Install Instructions

1. Tape the included template to your rear bumper. Cut the inner outline.



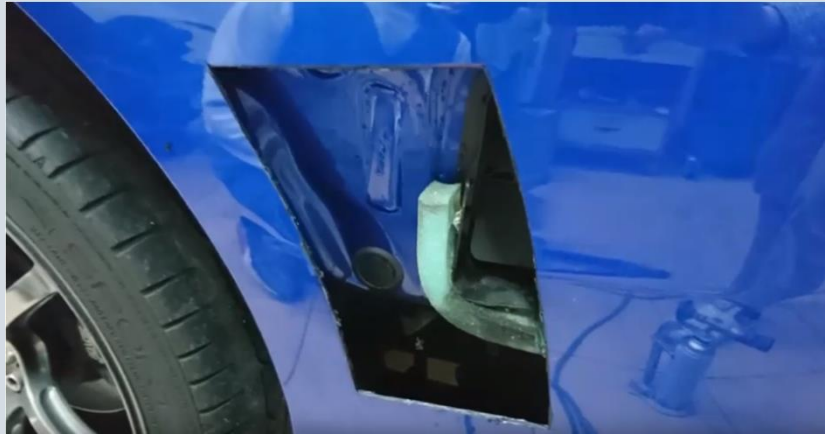
2. This is the area you will cut out of the bumper. The second outer line represents how much the duct will cover, which will overlap to provide a clean edge.



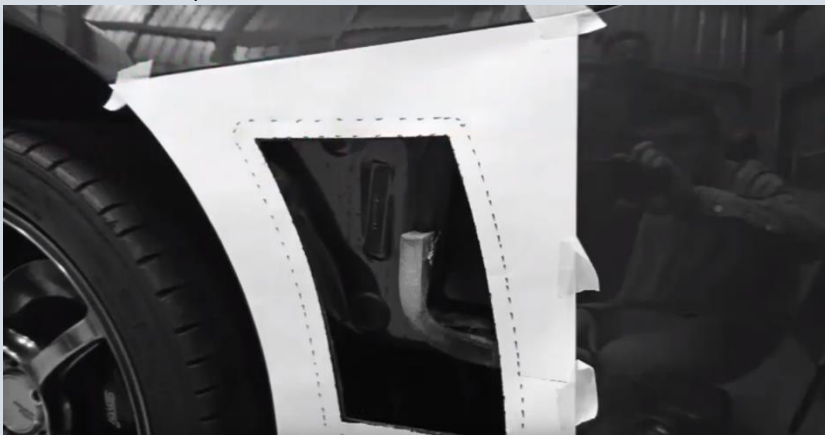
3. Outline the cut area with a marker, then remove the template from the bumper.



4. Cut hole. There is a brace behind the bumper, so you may choose to take the bumper off or pull the side away from the vehicle slightly if you plan to cut on while it is on the vehicle.



5. Place template back on the bumper and test fit vent.



6. Cut template to the outside line. This will allow you to align and install the vent.



7. Use panel bondor or provided double sided tape to attach the vent to your bumper.

