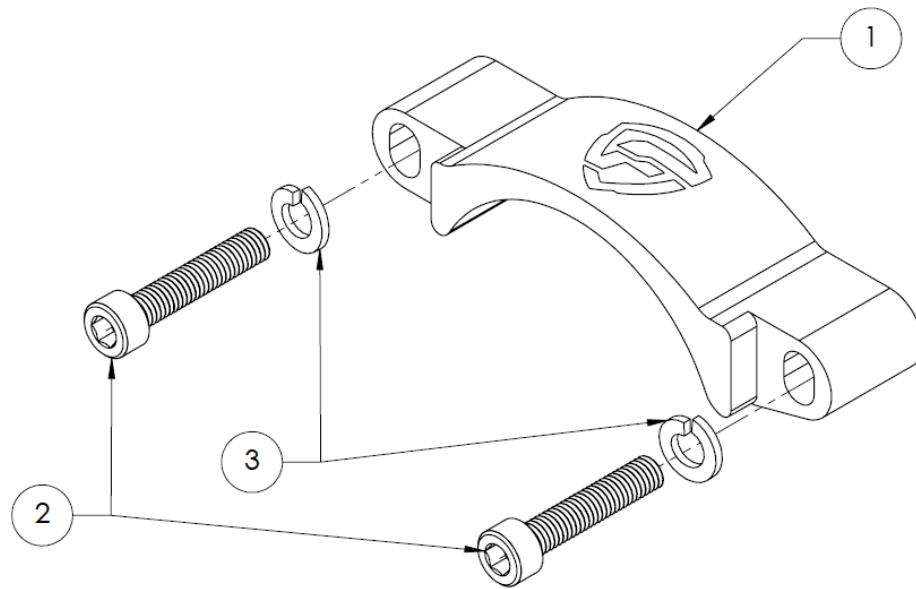




# INSTALLATION INSTRUCTIONS

FFA 1.10002.1

SUBARU EJ20/EJ25 TIMING BELT GUIDE



BILL OF MATERIALS			
Item #	Description	QTY	Part Number
1	GUIDE	1	2.10002.1.1
2	M6X1.0X30 BOLT	2	2.10002.1.2
3	SPLIT WASHER	2	2.10002.1.3

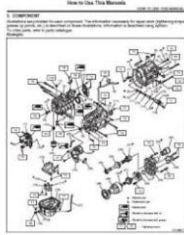
**DISCLAIMER:** PLEASE READ AND MAKE SURE YOU FULLY UNDERSTAND THE INSTALLATION INSTRUCTIONS PRIOR TO INSTALLING FACTION FAB PRODUCTS AND ACCESSORIES. FAILURE TO INSTALL THE PRODUCT CORRECTLY CAN AND WILL RESULT IN IRREVERSIBLE VEHICLE DAMAGE AND OR PERSONAL HARM. IF YOU DO NOT FEEL COMFORTABLE WITH ANY OF THE REQUIRED STEPS, WE HIGHLY SUGGEST TAKING THE VEHICLE TO A QUALIFIED AND EXPERIENCED TECHNICIAN. FAILURE TO UNDERSTAND THE INSTRUCTIONS WHICH RESULTS IN DAMAGE AND OR INJURY IS THE SOLE RESPONSIBILITY OF THE INSTALLER AND ALL FAULT LIES WITH THAT PARTY AND OR INDIVIDUAL AND IS NOT IN ANY WAY, SHAPE OR FORM THE RESPONSIBILITY OF FACTION FAB.

FACTION FAB PRODUCTS ARE SOLD FOR "OFF-ROAD" USE ONLY AND MAY NOT MEET LEGAL REQUIREMENTS FOR OPERATIONS ON PUBLIC ROADS AND HIGHWAYS. WE PUT THE RESPONSIBILITY SOLELY ON THE END CONSUMER/CUSTOMER TO VERIFY THAT THE PRODUCTS DO NOT EFFECT THE VEHICLES ELIGIBILITY TO BE DRIVEN ON PUBLIC ROADS AND HIGHWAYS. INSTALLATION OF FACTION FAB PRODUCTS MAY VOID FACTORY OR AFTERMARKET WARRANTIES.

USE OF PRODUCT IN A NON-CONFIRMED APPLICATION, DISASSEMBLY OF THE PRODUCT, MODIFICATION OF THE PRODUCT, EXPOSING PRODUCT TO CORROSIVE OR PETROLIUM BASED CHEMICANS WILL VOID ANY AND ALL WARRANTY.

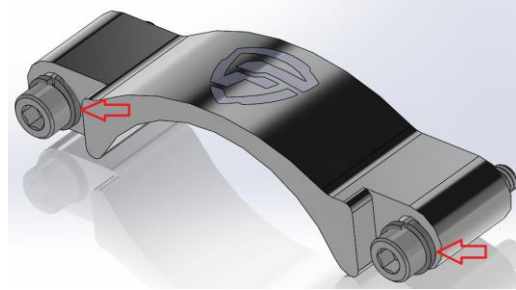
1

DUE TO A LARGE VARIATIONS OF APPLICABLE VEHICLES WE STRONGLY RECOMMEND CONSULTING THE FACTORY SERVICE MANUAL ON HOW TO TAKE THE TIMING COVER OFF.



2

ONCE THE STOCK GUIDE HAS BEEN REMOVED. LOOSELY INSTALL THE NEW GUIDE WITH SUPPLIED LOCK WASHERS BETWEEN THE GUIDE AND THE HEAD OF THE BOLT.



3

THE NEW GUIDE IS ADJUSTABLE, AND CAN MOVE SEVERAL MM'S UP AND DOWN TO SET THE DISTANCE BETWEEN GUIDE AND BELT



4

SETTING INCORRECT CLEARANCE **WILL** RESULT IN CONTACT AND TIMING BELT **FAILURE** CAN OCCURE!



5

SET CLEARANCE OF  $1.0 \pm 0.5$ mm BETWEEN THE BELT AND THE GUIDE. CHECK THE CLEARANCE ALL AROUND WITH A FEELER GUAGE TO ENSURE PROPER GAP.



6

TIGHTEN HARDWARE TO FACTORY TORQUE SPECIFICATION USING A 5MM ALLEN. RE-ASSEMBLE MOTOR BY REFERENCING THE FACTORY MANUAL

